

\$175,000 - Range Road 231, Rural Athabasca County

MLS® #A2214821

\$175,000

0 Bedroom, 0.00 Bathroom,
Land on 62.07 Acres

NONE, Rural Athabasca County, Alberta

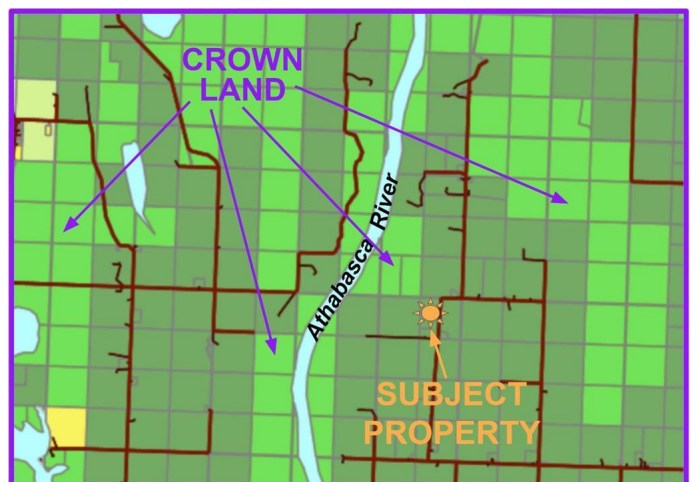
Private and spacious 62 acres - less than 20 minutes from Athabasca. With over 30 treed acres (with clearings) this is the perfect recreational property - or start planning your dream home! The corner of the property touches onto Crown Land, where there's a trail to access the Athabasca River. The perfect location for the outdoor enthusiast - sledding, ATV, hunting, camping... The property includes an 18' Travelaire Rustler camping trailer for you to start using it this fall... plan your cabin in the woods... or your forever home!

Essential Information

MLS® #	A2214821
Price	\$175,000
Bathrooms	0.00
Acres	62.07
Type	Land
Sub-Type	Commercial Land
Status	Active

Community Information

Address	Range Road 231
Subdivision	NONE
City	Rural Athabasca County
County	Athabasca County
Province	Alberta
Postal Code	T0G 0R0



Additional Information

Date Listed	April 22nd, 2025
Days on Market	1
Zoning	A-Agriculture

Listing Details

Listing Office	3% REALTY PROGRESS
----------------	--------------------

Data is supplied by Pillar 9â„¸ MLSÂ® System. Pillar 9â„¸ is the owner of the copyright in its MLSÂ® System. Data is deemed reliable but is not guaranteed accurate by Pillar 9â„¸. The trademarks MLSÂ®, Multiple Listing ServiceÂ® and the associated logos are owned by The Canadian Real Estate Association (CREA) and identify the quality of services provided by real estate professionals who are members of CREA. Used under license.