

\$125,000 - 59, 260300 Writing Creek Crescent, Rural Rocky View County

MLS® #A2214682

\$125,000

0 Bedroom, 0.00 Bathroom,
Commercial on 4.00 Acres

NONE, Rural Rocky View County, Alberta

TURNKEY AND READY TO START SELLING, WITH FULL BUILDOUT AND INVENTORY!! This is your opportunity to own a beautifully designed, thoughtfully curated retail unit in the heart of New Horizon Mall. Currently operating as a high-end luxury lingerie store, this space is ready for the next visionary owner to step in and make their mark.

Over \$50,000 in professional renovations have transformed this unit into a stunning, upscale boutique, with every detail crafted by top-tier interior designers. The elegant finishes, custom displays, and intimate lighting all work together to create a one-of-a-kind shopping experience that feels both exclusive and inviting.

Included in the sale is \$116,000 worth of inventory (resale value), offering immediate value. Whether you continue the current concept or rebrand, the infrastructure is in place to support a premium retail business. New Horizon Mall continues to grow as a diverse shopping destination, and this unit stands out as one of the most beautifully finished in the entire development. The existing business concept was developed with care, intention, and a deep understanding of its niche market.



Over \$50,000 in professional renovations have transformed this unit into a stunning, upscale boutique, with every detail crafted by top-tier interior designers. The elegant finishes, custom displays, and intimate lighting all work together to create a one-of-a-kind shopping experience that feels both exclusive and inviting.

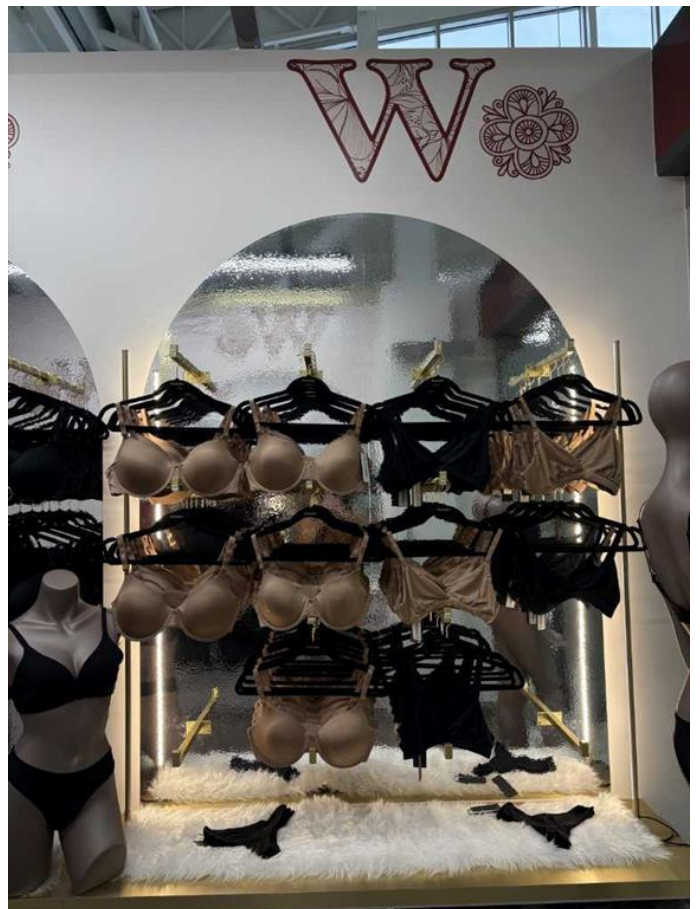
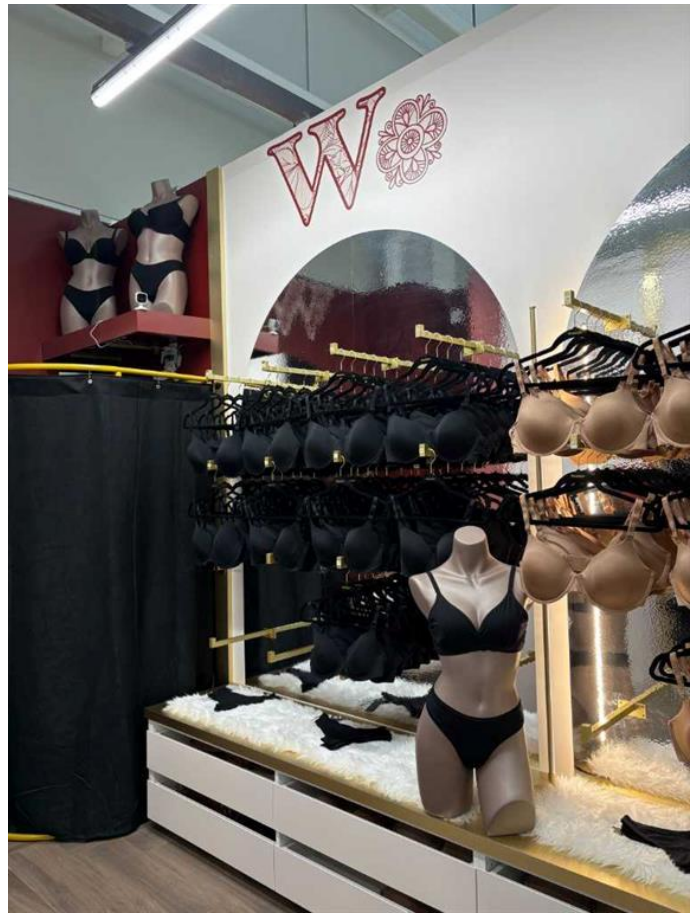
Included in the sale is \$116,000 worth of inventory (resale value), offering immediate value. Whether you continue the current concept or rebrand, the infrastructure is in place to support a premium retail business.

New Horizon Mall continues to grow as a diverse shopping destination, and this unit stands out as one of the most beautifully finished in the entire development. The existing business concept was developed with care, intention, and a deep understanding of its niche market.

Built in 2018

Essential Information

MLS® #	A2214682
Price	\$125,000
Bathrooms	0.00
Acres	4.00
Year Built	2018
Type	Commercial
Sub-Type	Retail
Status	Active



Community Information

Address	59, 260300 Writing Creek Crescent
Subdivision	NONE
City	Rural Rocky View County
County	Rocky View County
Province	Alberta
Postal Code	T4A0X8

Additional Information

Date Listed	April 25th, 2025
Days on Market	1
Zoning	DC

Listing Details

Listing Office	The Real Estate District
----------------	--------------------------

Data is supplied by Pillar 9â„¢ MLSÂ® System. Pillar 9â„¢ is the owner of the copyright in its MLSÂ® System. Data is deemed reliable but is not guaranteed accurate by Pillar 9â„¢. The trademarks MLSÂ®, Multiple Listing ServiceÂ® and the associated logos are owned by The Canadian Real Estate Association (CREA) and identify the quality of services provided by real estate professionals who are members of CREA. Used under license.