

\$419,900 - 147 Lanterman Close, Red Deer

MLS® #A2213952

\$419,900

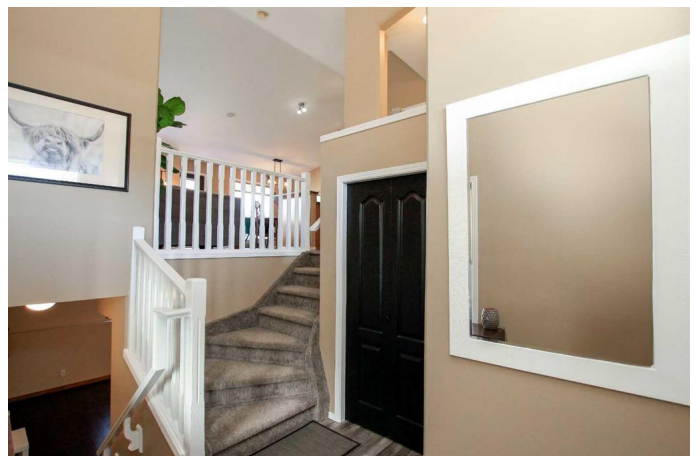
4 Bedroom, 2.00 Bathroom, 1,082 sqft

Residential on 0.10 Acres

Lonsdale, Red Deer, Alberta

FULLY DEVELOPED 4 BEDROOM, 2
BATHROOM BI-LEVEL IN LONSDALE ~
IMMEDIATE POSSESSION AVAILABLE
~LARGE OFF STREET PARKING PAD ~

Covered front veranda welcomes you to this well cared for home ~ The spacious foyer offers raised ceilings that open to the upper level ~ Open concept main floor layout complemented by soaring vaulted ceilings that creates a feeling of spaciousness ~ The living room is a generous size and is filled with natural light from a large window that overlooks the backyard ~ The kitchen offers a functional layout with plenty of warm stained cabinets, ample counter space including an island with a raised eating bar, upgraded appliances including a newer black stainless steel fridge and built in microwave, and a walk in corner pantry with built in shelving ~ Easily host gatherings in the dining room with a garden door and phantom screen that leads to the deck and backyard ~ The primary bedroom can easily accommodate a king bed plus multiple pieces of furniture and includes a walk in closet ~ 4 piece main bathroom has an oversized vanity and convenient linen closet ~ The fully finished basement has large above grade windows and includes a massive family room, 2 additional bedrooms (one with a walk in closet), 4 piece bathroom, laundry and ample space for storage ~ The backyard is landscaped with well established trees, has a garden shed, and is fully fenced with back alley access ~ Rear parking pad has room for



two vehicles and potential RV parking ~
Located close to parks, playgrounds, walking trails, schools, Collicut Rec Centre, shopping and all other amenities ~ Move in ready!

Built in 2004

Essential Information

MLS® #	A2213952
Price	\$419,900
Bedrooms	4
Bathrooms	2.00
Full Baths	2
Square Footage	1,082
Acres	0.10
Year Built	2004
Type	Residential
Sub-Type	Detached
Style	Bi-Level
Status	Active

Community Information

Address	147 Lanterman Close
Subdivision	Lonsdale
City	Red Deer
County	Red Deer
Province	Alberta
Postal Code	T4R 3K3

Amenities

Utilities	Electricity Connected, Natural Gas Connected
Parking Spaces	2
Parking	Alley Access, Off Street, Parking Pad

Interior

Interior Features	Breakfast Bar, Built-in Features, Ceiling Fan(s), Central Vacuum, Chandelier, Closet Organizers, Kitchen Island, Open Floorplan, Pantry, Storage, Vaulted Ceiling(s), Vinyl Windows, Walk-In Closet(s), Wired for Sound
-------------------	-------------------------------------------------------------------------------------------------------------------------------------------------------------------------------------------------------------------------

Appliances	Dishwasher, Refrigerator, See Remarks, Stove(s), Washer/Dryer
Heating	Forced Air, Natural Gas
Cooling	None
Has Basement	Yes
Basement	Finished, Full

Exterior

Exterior Features	Private Entrance, Private Yard, Storage
Lot Description	Back Lane, Back Yard
Roof	Asphalt Shingle
Construction	Vinyl Siding
Foundation	Poured Concrete

Additional Information

Date Listed	April 25th, 2025
Days on Market	3
Zoning	R1N

Listing Details

Listing Office	Lime Green Realty Inc.
----------------	------------------------

Data is supplied by Pillar 9â„¢ MLS® System. Pillar 9â„¢ is the owner of the copyright in its MLS® System. Data is deemed reliable but is not guaranteed accurate by Pillar 9â„¢. The trademarks MLS®, Multiple Listing Service® and the associated logos are owned by The Canadian Real Estate Association (CREA) and identify the quality of services provided by real estate professionals who are members of CREA. Used under license.