

\$26 - 1201, 20 Dawson Wharf Mount, Chestermere

MLS® #A2212119

\$26

0 Bedroom, 0.00 Bathroom,
Commercial on 0.00 Acres

Dawson's Landing, Chestermere, Alberta

Great Opportunity to lease second floor office/retail space in the heart of Dawons Landing, Chestermere! This space is suitable for a dance studio, yoga, gym, immigration, insurance, financial service, kids learning centre, and many more uses.

Built in 2024

Essential Information

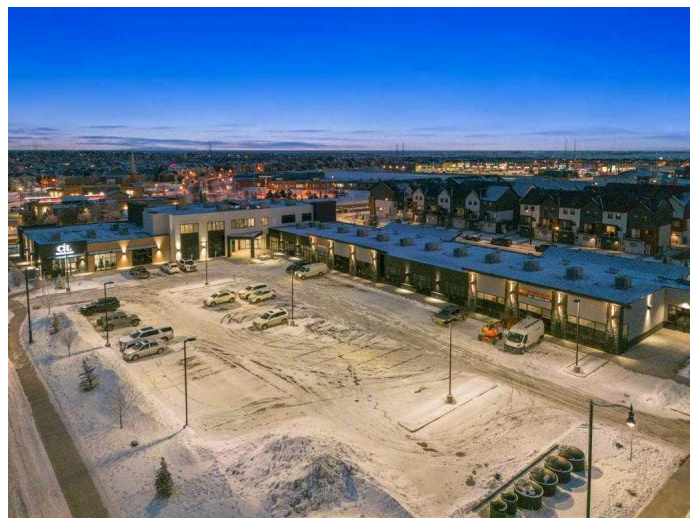
MLS® #	A2212119
Price	\$26
Bathrooms	0.00
Acres	0.00
Year Built	2024
Type	Commercial
Sub-Type	Office
Status	Active

Community Information

Address	1201, 20 Dawson Wharf Mount
Subdivision	Dawson's Landing
City	Chestermere
County	Chestermere
Province	Alberta
Postal Code	T1X 2Z5

Additional Information

Date Listed	April 15th, 2025
Days on Market	8



Listing Details

Listing Office Century 21 Bravo Realty

Data is supplied by Pillar 9â,,ç MLSÂ® System. Pillar 9â,,ç is the owner of the copyright in its MLSÂ® System. Data is deemed reliable but is not guaranteed accurate by Pillar 9â,,ç. The trademarks MLSÂ®, Multiple Listing ServiceÂ® and the associated logos are owned by The Canadian Real Estate Association (CREA) and identify the quality of services provided by real estate professionals who are members of CREA. Used under license.