

\$264,900 - 65, 51 Keystone Terrace W, Lethbridge

MLS® #A2210816

\$264,900

2 Bedroom, 2.00 Bathroom, 934 sqft
Residential on 0.38 Acres

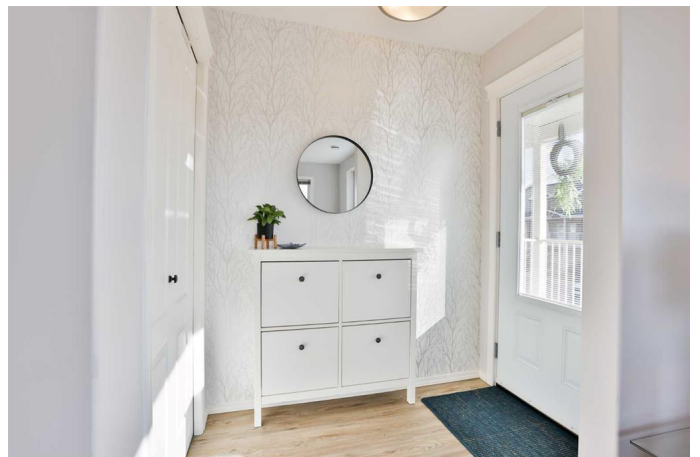
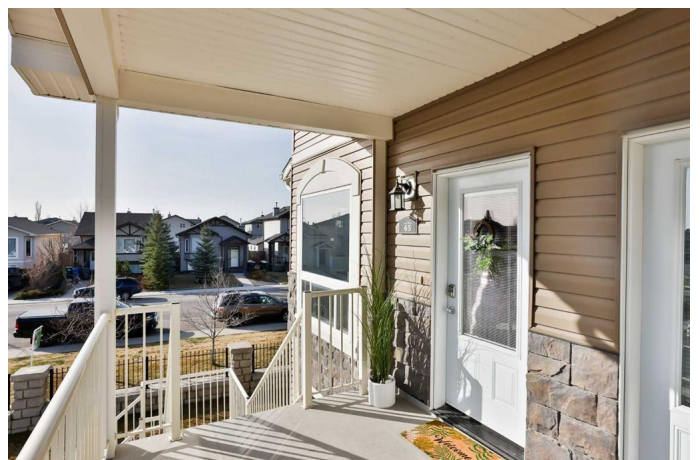
Copperwood, Lethbridge, Alberta

Here's a terrific, 2-storey, upper END-UNIT condo in a walkable, family-friendly neighbourhood! You'll notice lots of extras as soon as you step inside, including huge, south and east facing windows wrapping the entire main floor in sunshine. Luxury vinyl plank throughout adds a modern, updated touch. There is an electric fireplace in the living room, tons of gorgeous counter space in the kitchen, and a private balcony off the dining room. Check out the super-cute powder room too! Upstairs you'll find 2 bedrooms, a 4-piece bath, and conveniently located laundry in the hall. Lots of light up here too because each bedroom has TWO windows. When you're standing in this home, looking out over Copperwood, you can feel you're living the good life! Best of all, various shopping and local amenities are just steps away. Don't wait on this one. It's a rare find in today's market!

Built in 2010

Essential Information

MLS® #	A2210816
Price	\$264,900
Bedrooms	2
Bathrooms	2.00
Full Baths	1
Half Baths	1
Square Footage	934
Acres	0.38



Year Built	2010
Type	Residential
Sub-Type	Row/Townhouse
Style	2 Storey
Status	Active

Community Information

Address	65, 51 Keystone Terrace W
Subdivision	Copperwood
City	Lethbridge
County	Lethbridge
Province	Alberta
Postal Code	T1J 5B8

Amenities

Amenities	Parking
Parking Spaces	2
Parking	Stall, Assigned

Interior

Interior Features	Storage, Walk-In Closet(s)
Appliances	Dishwasher, Range, Refrigerator, Washer/Dryer
Heating	Natural Gas, Central
Cooling	Central Air
Fireplace	Yes
# of Fireplaces	1
Fireplaces	Electric, Living Room
Basement	None

Exterior

Exterior Features	Balcony
Lot Description	City Lot
Roof	Asphalt Shingle
Construction	Vinyl Siding
Foundation	Poured Concrete

Additional Information

Date Listed	April 11th, 2025
Days on Market	11

Zoning

R-75

Listing Details

Listing Office

RE/MAX REAL ESTATE - LETHBRIDGE

Data is supplied by Pillar 9â„¸ MLSÂ® System. Pillar 9â„¸ is the owner of the copyright in its MLSÂ® System. Data is deemed reliable but is not guaranteed accurate by Pillar 9â„¸. The trademarks MLSÂ®, Multiple Listing ServiceÂ® and the associated logos are owned by The Canadian Real Estate Association (CREA) and identify the quality of services provided by real estate professionals who are members of CREA. Used under license.