

\$534,900 - 31518 Rr 282 ., Rural Mountain View County

MLS® #A2210282

\$534,900

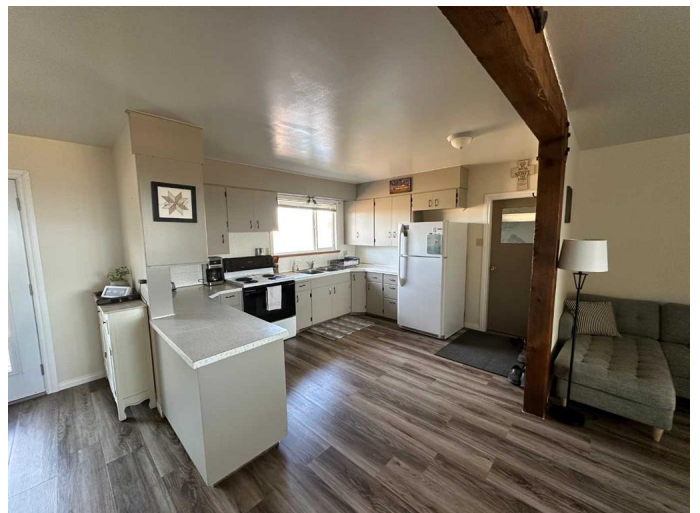
3 Bedroom, 2.00 Bathroom, 960 sqft

Residential on 2.32 Acres

NONE, Rural Mountain View County, Alberta

Have you been waiting for the perfect acreage to come on the market, where you could enjoy the country life yet only be 15 or 20 minutes from the grocery store? Your wishes have come true. This 2.3 ac property would be a great place to raise your family. With 3 bedrooms and 2 bathrooms it is all that you would need for now. There is a nice open floor plan which will create a fantastic atmosphere to visit with family and friends after a great home cooked meal. The garden doors off the dining room will give you access to the 10 x 20 west facing deck where you can enjoy a view of the awesome Rocky Mountains and the best BBQ's will also take place (medium well on the T-bone please) as you watch the BEAUTIFUL Alberta sunsets. On the eastside of the home there is a 10 x 40 covered veranda where you can enjoy your morning coffee, as the sun rises to greet the day. In recent years there has been many upgrades completed, including a high efficient furnace, power vent hot water tank, asphalt shingles and painting the exterior. The double attached garage with direct access to the home will be appreciated on the cool mornings when you're off to work. As prices continue to rise on groceries you'll be thankful for the large garden area where you can grow some of your own vegetables. Take a good serious look at this property and see if it is just what you have been looking for.

Built in 1955



Essential Information

| | |
|----------------|----------------------------------|
| MLS® # | A2210282 |
| Price | \$534,900 |
| Bedrooms | 3 |
| Bathrooms | 2.00 |
| Full Baths | 2 |
| Square Footage | 960 |
| Acres | 2.32 |
| Year Built | 1955 |
| Type | Residential |
| Sub-Type | Detached |
| Style | Acreage with Residence, Bungalow |
| Status | Active |

Community Information

| | |
|-------------|----------------------------|
| Address | 31518 Rr 282 . |
| Subdivision | NONE |
| City | Rural Mountain View County |
| County | Mountain View County |
| Province | Alberta |
| Postal Code | T0M 0W0 |

Amenities

| | |
|--------------|---|
| Parking | Double Garage Attached, Gravel Driveway |
| # of Garages | 2 |

Interior

| | |
|-------------------|--|
| Interior Features | No Animal Home, No Smoking Home |
| Appliances | Electric Stove, Refrigerator, Window Coverings |
| Heating | Forced Air, Natural Gas |
| Cooling | None |
| Has Basement | Yes |
| Basement | Full, Partially Finished |

Exterior

| | |
|-------------------|-----------------------|
| Exterior Features | Rain Gutters, Storage |
| Lot Description | Back Yard, Few Trees |
| Roof | Asphalt Shingle |
| Construction | Wood Frame |

Foundation Block

Additional Information

Date Listed April 10th, 2025
Days on Market 10
Zoning CR

Listing Details

Listing Office Front Porch Realty

Data is supplied by Pillar 9â„¢ MLS® System. Pillar 9â„¢ is the owner of the copyright in its MLS® System. Data is deemed reliable but is not guaranteed accurate by Pillar 9â„¢. The trademarks MLS®, Multiple Listing Service® and the associated logos are owned by The Canadian Real Estate Association (CREA) and identify the quality of services provided by real estate professionals who are members of CREA. Used under license.