

\$370,000 - 1813 10 Avenue, Wainwright

MLS® #A2208674

\$370,000

2 Bedroom, 2.00 Bathroom, 1,241 sqft
Residential on 0.18 Acres

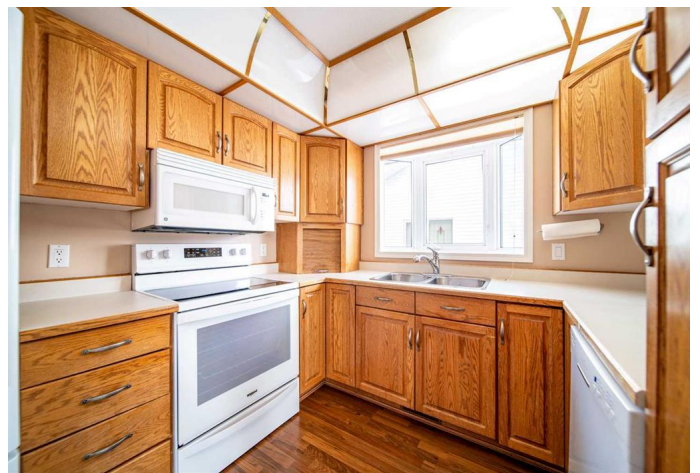
Wainwright, Wainwright, Alberta

Beautiful 1241 Sq.Ft. Bungalow Backing Onto Bevan Nature Area – Senior-Friendly Layout! Welcome to this exceptional 1241 sq.ft. bungalow nestled in a prime location backing directly onto the serene Bevan Nature Area – offering peaceful views, walking trails, and playground for the kids. Designed with comfort and accessibility in mind, this home features a senior-friendly layout with main floor laundry. The spacious main level boasts a large primary bedroom, full bathroom, a bright and open living area, and a functional kitchen with views of the natural green space. Downstairs you'll find two additional bedrooms, a second full bathroom, and plenty of extra living space – perfect for visiting family, guests, or hobbies. The double attached garage is heated, offering convenient access and comfort year-round. Whether you're looking to downsize in style or want the perfect blend of modern living and natural beauty, this home checks all the boxes. Move-in ready, well cared for, and in an unbeatable location – don't miss your chance to call this beautiful bungalow home!

Built in 1993

Essential Information

MLS® #	A2208674
Price	\$370,000
Bedrooms	2



Bathrooms	2.00
Full Baths	2
Square Footage	1,241
Acres	0.18
Year Built	1993
Type	Residential
Sub-Type	Detached
Style	Bungalow
Status	Active

Community Information

Address	1813 10 Avenue
Subdivision	Wainwright
City	Wainwright
County	Wainwright No. 61, M.D. of
Province	Alberta
Postal Code	T9W 1L4

Amenities

Parking Spaces	5
Parking	Double Garage Attached
# of Garages	2

Interior

Interior Features	Built-in Features, Ceiling Fan(s)
Appliances	Dishwasher, Dryer, Electric Stove, Refrigerator, Washer, Window Coverings
Heating	Forced Air, Natural Gas
Cooling	Central Air
Has Basement	Yes
Basement	Finished, Full

Exterior

Exterior Features	Rain Gutters
Lot Description	Back Lane, Back Yard, Front Yard, Landscaped, Lawn, Backs on to Park/Green Space
Roof	Asphalt Shingle
Construction	Stucco, Wood Frame
Foundation	Poured Concrete

Additional Information

Date Listed	April 3rd, 2025
Days on Market	19
Zoning	R1

Listing Details

Listing Office CENTURY 21 CONNECT REALTY

Data is supplied by Pillar 9â„¸ MLSÂ® System. Pillar 9â„¸ is the owner of the copyright in its MLSÂ® System. Data is deemed reliable but is not guaranteed accurate by Pillar 9â„¸. The trademarks MLSÂ®, Multiple Listing ServiceÂ® and the associated logos are owned by The Canadian Real Estate Association (CREA) and identify the quality of services provided by real estate professionals who are members of CREA. Used under license.