

# \$668,500 - 59 Ravine Drive, Whitecourt

MLS® #A2205924

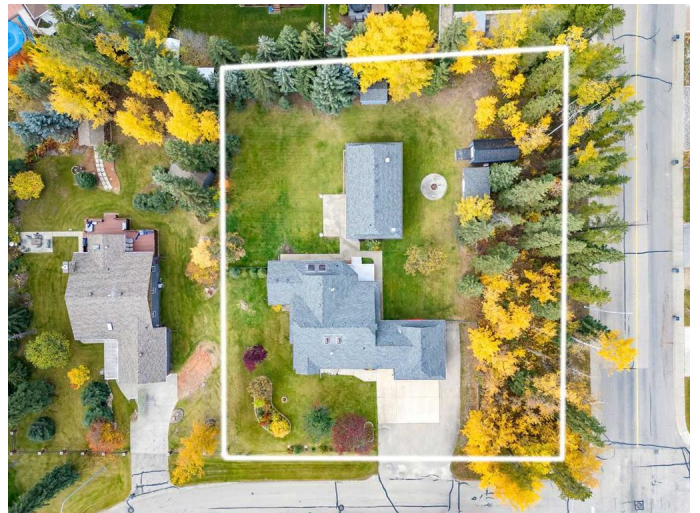
**\$668,500**

6 Bedroom, 3.00 Bathroom, 2,428 sqft

Residential on 1.02 Acres

NONE, Whitecourt, Alberta

"HUGE EXECUTIVE BUNGALOW ON 1.02 ACRES IN TOWN !!" If you're looking for the extra space for your whole family, in-laws , grandparents , or just want a large home, this may be the property ! Offering over 2400 sq.ft. on the main level, this home has 6 bedrooms plus office, 2 laundry rooms, 3 separate living rooms , games room, and a 1400 sq.ft. separate heated building with full bathroom perfect for a potential in-law suite or home run business ( with the proper approval from the Town), this remarkable and unique home has it all. This prize has a large and beautifully redone kitchen with quartz countertops, large island ,separate pantry and bright windows. Main level also has a living room , great room with wood burning fireplace, large dining room, sunroom facing the back yard, office, and one of the 2 laundry rooms. Main level also has a large master bedroom with 5 piece ensuite and stand alone tub. There is a second bedroom and another full bathroom to complete the main level. There is an impressive circular staircase heading to the lower level which has 4 more bedrooms ,second laundry room, another full bathroom, huge family room and a large games room. There are 3 storage rooms in the basement as well as a wet bar . There is a covered back deck off the sun room as well as another large deck off the master bedroom. This impressive property has an oversized heated 28'x24' garage as well as a 50'x28' heated recreational building with a full bathroom. This



secondary 1400 sq.ft. building would be a perfect setup for a mother-in-law suite, or to run a home-based business out of, or for a large gym or to just store all your toys. There are 3 sheds, and a firepit area on this well manicured lot on Ravine Drive. This home comes complete with upgraded appliances and even is customized for wheelchair accessibility. Definitely lots to see here , offered at a great asking price !!!

Built in 1987

### **Essential Information**

MLS® #	A2205924
Price	\$668,500
Bedrooms	6
Bathrooms	3.00
Full Baths	3
Square Footage	2,428
Acres	1.02
Year Built	1987
Type	Residential
Sub-Type	Detached
Style	Bungalow
Status	Active

### **Community Information**

Address	59 Ravine Drive
Subdivision	NONE
City	Whitecourt
County	Woodlands County
Province	Alberta
Postal Code	T7S1H9

### **Amenities**

Parking Spaces	10
Parking	Additional Parking, Double Garage Detached, Driveway, Garage Door Opener, Heated Garage, Oversized, Parking Pad, RV Access/Parking, Converted Garage, Paved

# of Garages 2

## Interior

Interior Features Bar, Built-in Features, Ceiling Fan(s), Closet Organizers, Granite Counters, High Ceilings, Kitchen Island, No Smoking Home, Open Floorplan, Pantry, See Remarks, Separate Entrance, Skylight(s), Storage, Vinyl Windows, Walk-In Closet(s), Wet Bar

Appliances Dishwasher, Dryer, Garage Control(s), Microwave, Range Hood, Refrigerator, Stove(s), Washer, Window Coverings

Heating Fireplace(s), Forced Air, Natural Gas, Wood

Cooling Central Air

Fireplace Yes

# of Fireplaces 1

Fireplaces Mantle, Stone, Wood Burning, Great Room

Has Basement Yes

Basement Finished, Full

## Exterior

Exterior Features Fire Pit

Lot Description Back Yard, City Lot, Front Yard, Landscaped, Lawn, Many Trees, Rectangular Lot

Roof Asphalt Shingle

Construction Brick, Mixed

Foundation Wood

## Additional Information

Date Listed March 26th, 2025

Days on Market 28

Zoning R-ER

## Listing Details

Listing Office RE/MAX ADVANTAGE (WHITECOURT)

Data is supplied by Pillar 9â„¢ MLSÂ® System. Pillar 9â„¢ is the owner of the copyright in its MLSÂ® System. Data is deemed reliable but is not guaranteed accurate by Pillar 9â„¢. The trademarks MLSÂ®, Multiple Listing ServiceÂ® and the associated logos are owned by The Canadian Real Estate Association (CREA) and identify the quality of services provided by real estate professionals who are members of CREA. Used under license.