

\$4,500 - 2, 6838 50 Avenue, Red Deer

MLS® #A2205236

\$4,500

0 Bedroom, 0.00 Bathroom,
Commercial on 0.00 Acres

Normandeau, Red Deer, Alberta

This 3,100 SF retail unit is available for lease. The unit features a wide-open retail area with a built-in counter, three additional rooms that can be used as an office or more retail space, a staff kitchenette, a storage room, and one washroom. There is both a front entrance for customers and a side entrance for staff. Ample paved parking is available directly in front of the unit, shared with the neighbouring tenants. This is a gross lease and includes utilities with the exception of electricity which is on a sub-meter. The unit offers excellent 50th (Gaetz) Avenue frontage where thousands of cars pass by daily.

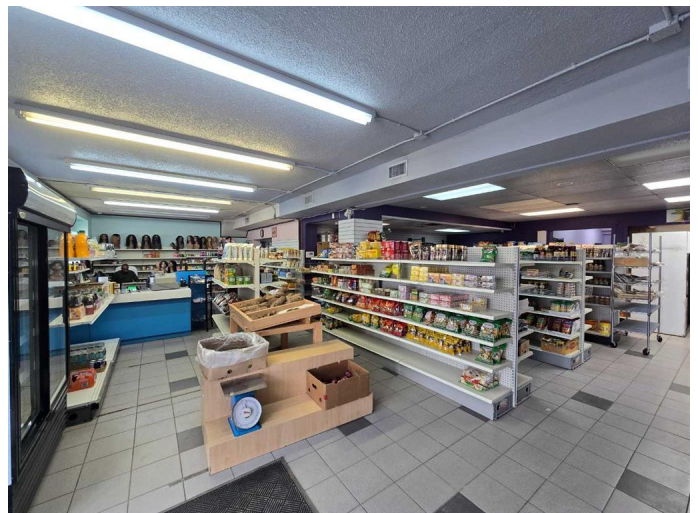
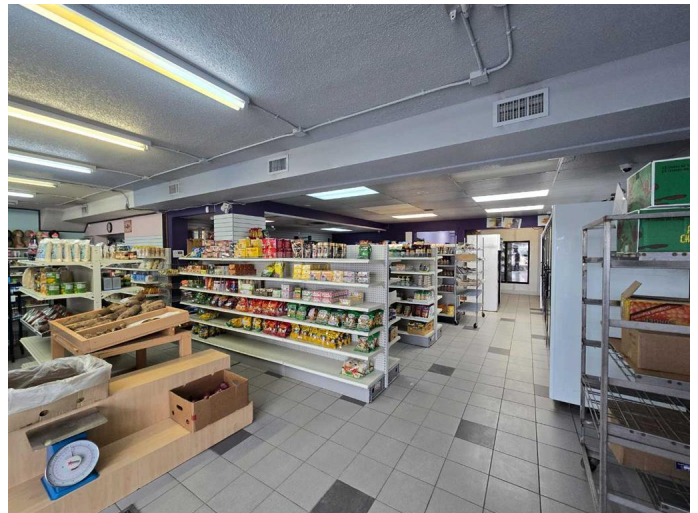
Built in 1960

Essential Information

MLS® #	A2205236
Price	\$4,500
Bathrooms	0.00
Acres	0.00
Year Built	1960
Type	Commercial
Sub-Type	Retail
Status	Active

Community Information

Address	2, 6838 50 Avenue
Subdivision	Normandeau
City	Red Deer



County	Red Deer
Province	Alberta
Postal Code	T4N 4E3

Additional Information

Date Listed	March 26th, 2025
Days on Market	28
Zoning	C4

Listing Details

Listing Office	RE/MAX Commercial Properties
----------------	------------------------------

Data is supplied by Pillar 9â„¢ MLS® System. Pillar 9â„¢ is the owner of the copyright in its MLS® System. Data is deemed reliable but is not guaranteed accurate by Pillar 9â„¢. The trademarks MLS®, Multiple Listing Service® and the associated logos are owned by The Canadian Real Estate Association (CREA) and identify the quality of services provided by real estate professionals who are members of CREA. Used under license.