

\$440,000 - 402, 101 Panatella Square Nw, Calgary

MLS® #A2204211

\$440,000

2 Bedroom, 3.00 Bathroom, 1,211 sqft

Residential on 0.00 Acres

Panorama Hills, Calgary, Alberta

Beautiful 2 story Townhouse in Panorama hills, Main floor features 10ft vinyl plank floors throughout , kitchen with quartz island Stainless steel appliances, Bright and open concept. 2 pc bathroom and Laundry on the top level. Upstairs features 2 bedrooms Master with 3piece ensuite. Single garage attached located close to shopping, schools, Vivo Rec Center

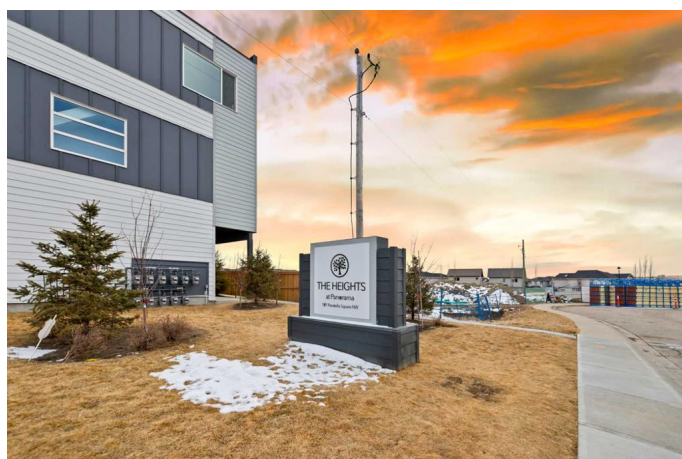
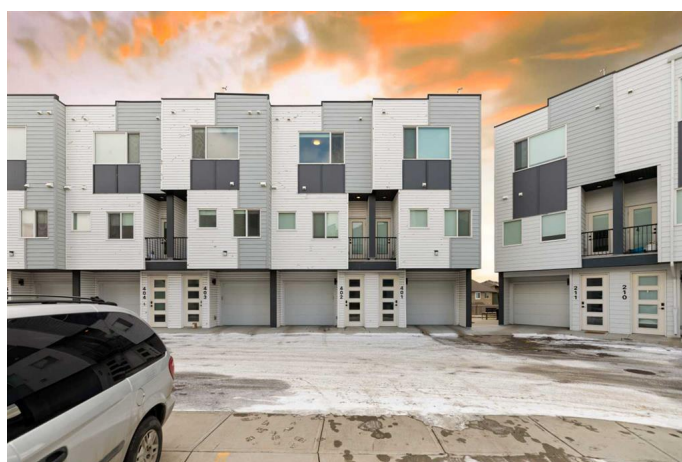
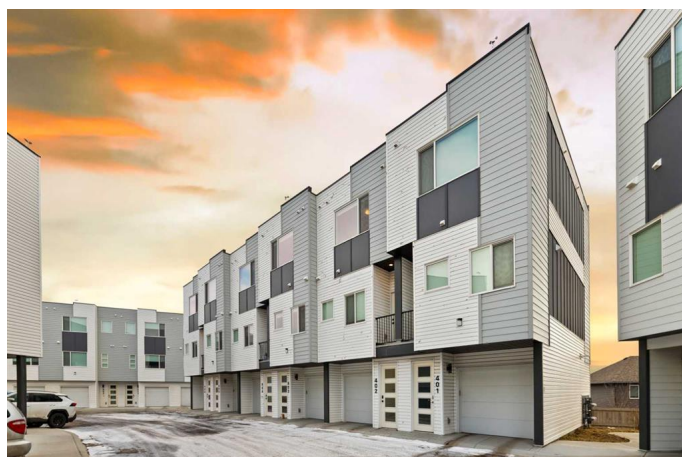
Built in 2019

Essential Information

MLS® #	A2204211
Price	\$440,000
Bedrooms	2
Bathrooms	3.00
Full Baths	2
Half Baths	1
Square Footage	1,211
Acres	0.00
Year Built	2019
Type	Residential
Sub-Type	Row/Townhouse
Style	2 Storey
Status	Active

Community Information

Address	402, 101 Panatella Square Nw
Subdivision	Panorama Hills



City	Calgary
County	Calgary
Province	Alberta
Postal Code	T3K 2R9

Amenities

Amenities	Playground, Visitor Parking
Parking Spaces	1
Parking	Single Garage Detached
# of Garages	1

Interior

Interior Features	No Animal Home, No Smoking Home, Open Floorplan
Appliances	Dishwasher, Electric Stove, Microwave Hood Fan, Refrigerator, Washer/Dryer Stacked
Heating	Central
Cooling	None
Basement	None

Exterior

Exterior Features	Playground
Lot Description	See Remarks
Roof	Asphalt/Gravel
Construction	Wood Frame
Foundation	Poured Concrete

Additional Information

Date Listed	March 20th, 2025
Days on Market	33
Zoning	M-1

Listing Details

Listing Office	RE/MAX Real Estate (Central)
----------------	------------------------------

Data is supplied by Pillar 9â„¢ MLS® System. Pillar 9â„¢ is the owner of the copyright in its MLS® System. Data is deemed reliable but is not guaranteed accurate by Pillar 9â„¢. The trademarks MLS®, Multiple Listing Service® and the associated logos are owned by The Canadian Real Estate Association (CREA) and identify the quality of services provided by real estate professionals who are members of CREA. Used under license.