

# \$620,000 - 628 Maryvale Way Ne, Calgary

MLS® #A2202491

**\$620,000**

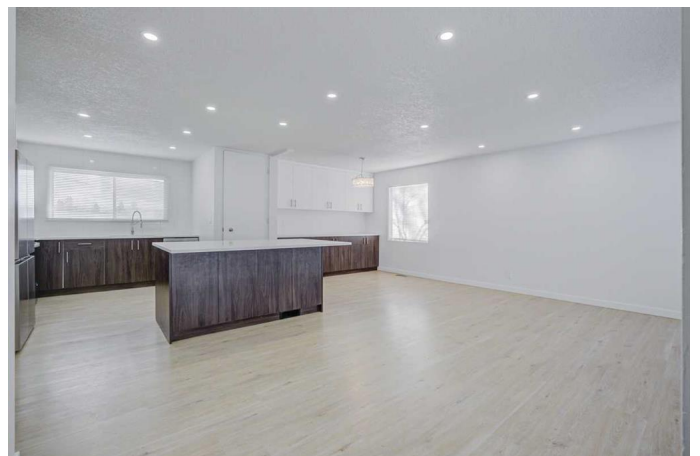
5 Bedroom, 3.00 Bathroom, 1,121 sqft

Residential on 0.13 Acres

Marlborough, Calgary, Alberta

| 5 BEDS | 2.5 BATHS | 2 KITCHENS |  
SEPARATE ENTRANCE | DOUBLE DET  
GARAGE | Welcome to this recently renovated  
bungalow in the community of Marlborough!

This bright and inviting home features vinyl plank flooring throughout, paired with plenty of natural light coming through large windows. The large living area seamlessly opens up to the kitchen, which boasts plenty of cabinetry, a large island with quartz countertops, and a convenient dining area. The main floor offers three bedrooms, including a primary bedroom with its own 2-piece ensuite, as well as an additional 4-piece bathroom. The fully finished basement includes its own kitchen, a generous open living space, two additional bedrooms, and a full bathroom. A separate entrance provides easy access to the backyard, which features a large deck perfect for entertaining. The double detached garage at the back adds convenience and extra parking. Located close to schools, shopping, parks, and other amenities, this home is perfect for families or investors. Don't miss out! book a showing with your favourite agent today!



Built in 1971

## Essential Information

MLS® # A2202491

Price \$620,000

Bedrooms 5

Bathrooms	3.00
Full Baths	2
Half Baths	1
Square Footage	1,121
Acres	0.13
Year Built	1971
Type	Residential
Sub-Type	Detached
Style	Bungalow
Status	Active

### Community Information

Address	628 Maryvale Way Ne
Subdivision	Marlborough
City	Calgary
County	Calgary
Province	Alberta
Postal Code	T2A 2V7

### Amenities

Parking Spaces	2
Parking	Double Garage Detached
# of Garages	2

### Interior

Interior Features	See Remarks
Appliances	Dryer, Washer
Heating	Forced Air
Cooling	None
Fireplace	Yes
# of Fireplaces	1
Fireplaces	Wood Burning
Has Basement	Yes
Basement	Exterior Entry, Finished, Full, Suite

### Exterior

Exterior Features	Other
Lot Description	Back Lane, Rectangular Lot
Roof	Asphalt Shingle

Construction	Wood Frame
Foundation	Poured Concrete

**Additional Information**

Date Listed	March 14th, 2025
Days on Market	35
Zoning	R-CG

**Listing Details**

Listing Office	eXp Realty
----------------	------------

Data is supplied by Pillar 9â„¢ MLS® System. Pillar 9â„¢ is the owner of the copyright in its MLS® System. Data is deemed reliable but is not guaranteed accurate by Pillar 9â„¢. The trademarks MLS®, Multiple Listing Service® and the associated logos are owned by The Canadian Real Estate Association (CREA) and identify the quality of services provided by real estate professionals who are members of CREA. Used under license.