

# \$11 - 104, 8930 111 Street, Grande Prairie

MLS® #A2202209

**\$11**

0 Bedroom, 0.00 Bathroom,  
Commercial on 7.40 Acres

Richmond Industrial Park, Grande Prairie,  
Alberta

Total Monthly Payment \$3,748.65+ gst. FOR  
LEASE: MAIN FLOOR

Gym/Warehouse/Retail: 2,815 +/- sq. ft.  
(42'x66'+/-) in multi-tenant 73,200 total +/- sq.  
ft. building. Space includes ceiling fan,  
overhead unit heater, 20' clear ceiling height,  
washroom with shower PARKING:

Proportionate share SIGNAGE: Above man  
door ZONING: IG-General Industrial

LOCATION: Richmond Industrial Park. RENT:

\$2,580.42/month (\$11.00/sq. ft.) + GST NET

COST: \$1,168.23/month (\$4.98/sq. ft.) + GST

UTILITIES: ALL INCLUDED in net cost:

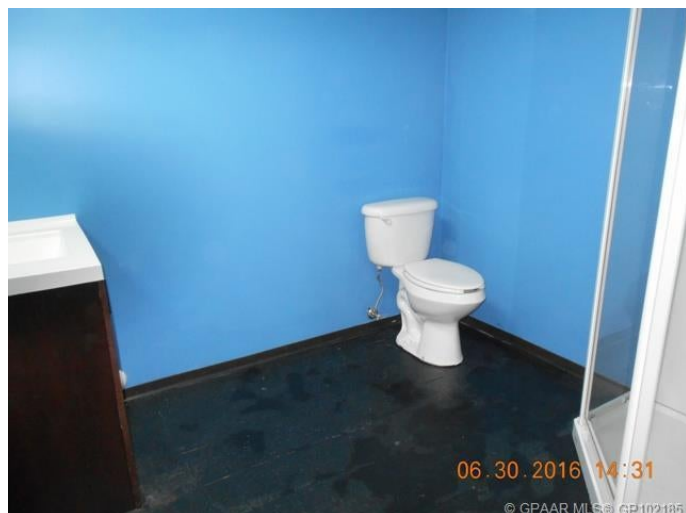
Gas/Power/Water AVAILABLE: May 1, 2025.

SUPPLEMENTS: Total Monthly Payment, Plot  
Plan. To obtain copies of SUPPLEMENTS not  
visible on this site please contact a  
REALTOR®.

Built in 1977

## Essential Information

MLS® #	A2202209
Price	\$11
Bathrooms	0.00
Acres	7.40
Year Built	1977
Type	Commercial
Sub-Type	Warehouse
Status	Active



## Community Information

Address	104, 8930 111 Street
Subdivision	Richmond Industrial Park
City	Grande Prairie
County	Grande Prairie
Province	Alberta
Postal Code	T8V 4W1

## Interior

Heating	Natural Gas
---------	-------------

## Additional Information

Date Listed	March 17th, 2025
Days on Market	38

## Listing Details

Listing Office	CommVest Realty Ltd.
----------------	----------------------

Data is supplied by Pillar 9â„¢ MLSÂ® System. Pillar 9â„¢ is the owner of the copyright in its MLSÂ® System. Data is deemed reliable but is not guaranteed accurate by Pillar 9â„¢. The trademarks MLSÂ®, Multiple Listing ServiceÂ® and the associated logos are owned by The Canadian Real Estate Association (CREA) and identify the quality of services provided by real estate professionals who are members of CREA. Used under license.