

\$725,000 - 1206 Regal Crescent Ne, Calgary

MLS® #A2201473

\$725,000

3 Bedroom, 2.00 Bathroom, 960 sqft
Residential on 0.12 Acres

Renfrew, Calgary, Alberta

ATTENTION BUILDERS AND INVESTORS!
Great development opportunity on this sub-dividable flat lot in the desirable inner city community of Renfrew. This community offers mature trees and the perfect location for a new inner-city home. Several new infills on this popular street. RPR 2025. Minutes walk away from an off-leash dog park, parks, playgrounds, schools, shops, restaurants and public transit. Easy access to downtown, Deerfoot Trail and 16th Ave., and extensive redevelopment to the neighborhood.

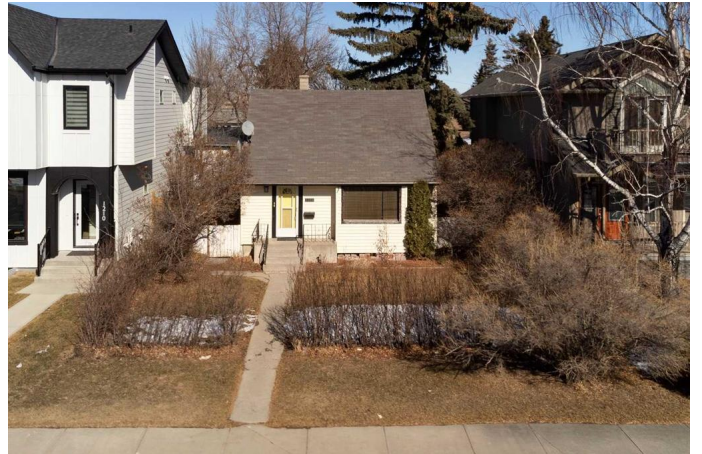
Built in 1947

Essential Information

MLS® #	A2201473
Price	\$725,000
Bedrooms	3
Bathrooms	2.00
Full Baths	2
Square Footage	960
Acres	0.12
Year Built	1947
Type	Residential
Sub-Type	Detached
Style	1 and Half Storey
Status	Active

Community Information

Address 1206 Regal Crescent Ne



Subdivision	Renfrew
City	Calgary
County	Calgary
Province	Alberta
Postal Code	T2E 5H3

Amenities

Parking Spaces	2
Parking	Double Garage Detached
# of Garages	2

Interior

Interior Features	See Remarks
Appliances	Dishwasher, Dryer, Range Hood, Refrigerator, Washer, Window Coverings, Electric Range, Microwave
Heating	Other
Cooling	None
Has Basement	Yes
Basement	Finished, Full

Exterior

Exterior Features	Other
Lot Description	Back Lane, Back Yard, Rectangular Lot
Roof	Asphalt Shingle
Construction	Vinyl Siding
Foundation	Poured Concrete

Additional Information

Date Listed	March 13th, 2025
Days on Market	22
Zoning	R-CG

Listing Details

Listing Office	RE/MAX House of Real Estate
----------------	-----------------------------

Data is supplied by Pillar 9â„¢ MLSÂ® System. Pillar 9â„¢ is the owner of the copyright in its MLSÂ® System. Data is deemed reliable but is not guaranteed accurate by Pillar 9â„¢. The trademarks MLSÂ®, Multiple Listing ServiceÂ® and the associated logos are owned by The Canadian Real Estate Association (CREA) and identify the quality of services provided by real estate professionals who are members of CREA. Used under license.