

\$585,000 - 801 S Railway Avenue, Drumheller

MLS® #A2189579

\$585,000

0 Bedroom, 0.00 Bathroom,
Commercial on 0.84 Acres

Downtown Drumheller, Drumheller, Alberta

Dimensions 80x60=4,800 sq ft. Three offices and large reception on the main floor, Two washrooms, 400 amp 3 phase power, 3 overhead heaters, 10 overhead industrial lights, In-floor sump. One large area and staff room on mezzanine. Air conditioned offices. LOT SIZE: 275.29 wide. Parcel Size: 0.840 acres. Zoning: ED (Employment District). Property currently rented to Excelsior Auto Service. Details will be provided once a non disclosure agreement is signed.

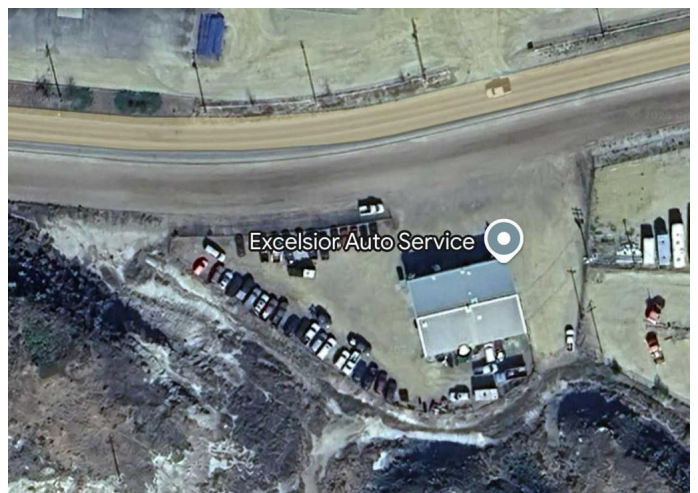
Built in 1000

Essential Information

| | |
|------------|------------|
| MLS® # | A2189579 |
| Price | \$585,000 |
| Bathrooms | 0.00 |
| Acres | 0.84 |
| Year Built | 1000 |
| Type | Commercial |
| Sub-Type | Industrial |
| Status | Active |

Community Information

| | |
|-------------|----------------------|
| Address | 801 S Railway Avenue |
| Subdivision | Downtown Drumheller |
| City | Drumheller |
| County | Drumheller |
| Province | Alberta |



Postal Code T0J 0Y6

Additional Information

Date Listed February 17th, 2025

Days on Market 70

Zoning ED

Listing Details

Listing Office Century 21 Masters

Data is supplied by Pillar 9â„¢ MLS® System. Pillar 9â„¢ is the owner of the copyright in its MLS® System. Data is deemed reliable but is not guaranteed accurate by Pillar 9â„¢. The trademarks MLS®, Multiple Listing Service® and the associated logos are owned by The Canadian Real Estate Association (CREA) and identify the quality of services provided by real estate professionals who are members of CREA. Used under license.