

\$899,999 - 1950 & 1952 66 Avenue Se, Calgary

MLS® #A2184214

\$899,999

0 Bedroom, 0.00 Bathroom, 2,498 sqft
Multi-Family on 0.13 Acres

Ogden, Calgary, Alberta

Discover unmatched potential with this spacious side-by-side duplex in the heart of Ogden. Located right across from Banting and Best, and Sherwood public schools with great transit at your doorstep.

Located in a vibrant community with easy access to schools, shopping, public transit, and major roadways, this side by side duplex combines convenience with opportunity. Don't miss out—schedule your viewing today and explore the possibilities!

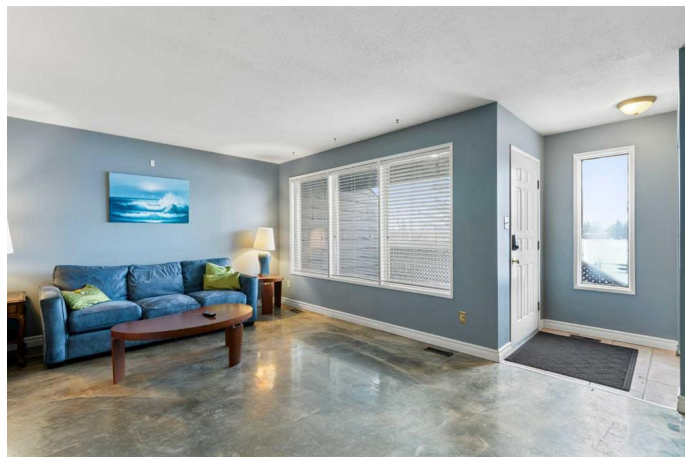
Built in 1982

Essential Information

MLS® #	A2184214
Price	\$899,999
Bathrooms	0.00
Square Footage	2,498
Acres	0.13
Year Built	1982
Type	Multi-Family
Sub-Type	Duplex
Style	Side by Side, Bungalow
Status	Active

Community Information

Address	1950 & 1952 66 Avenue Se
Subdivision	Ogden
City	Calgary



County	Calgary
Province	Alberta
Postal Code	T2C 3C1

Amenities

Parking Spaces	2
Parking	Alley Access, None, On Street

Interior

Appliances	Dishwasher, Dryer, Electric Stove, Microwave Hood Fan, Range Hood, Refrigerator, Washer
Heating	Forced Air, Natural Gas
Has Basement	Yes
Basement	Finished, Full

Exterior

Exterior Features	Private Entrance, Private Yard
Lot Description	Back Lane, Back Yard, Corner Lot, Lawn, Level, Rectangular Lot, Street Lighting, City Lot, Near Public Transit
Roof	Asphalt Shingle
Construction	Wood Siding
Foundation	Wood

Additional Information

Date Listed	December 20th, 2024
Days on Market	110
Zoning	R-CG

Listing Details

Listing Office	eXp Realty
----------------	------------

Data is supplied by Pillar 9â„¢ MLSÂ® System. Pillar 9â„¢ is the owner of the copyright in its MLSÂ® System. Data is deemed reliable but is not guaranteed accurate by Pillar 9â„¢. The trademarks MLSÂ®, Multiple Listing ServiceÂ® and the associated logos are owned by The Canadian Real Estate Association (CREA) and identify the quality of services provided by real estate professionals who are members of CREA. Used under license.