

\$2,980,000 - W4; R28;t22;s34;sw, Rural Rocky View County

MLS® #A2118603

\$2,980,000

0 Bedroom, 0.00 Bathroom,
Land on 142.00 Acres

NONE, Rural Rocky View County, Alberta

ATTENTION PRICE REDUCTION****This 142 acres of cultivated farmland is a prime Holding Property for Future Development potential. It has a Half-Mile-Long frontage on HWY 22X with in-out access. It is only 2 miles away from the HOTCHKISS COMMUNITY OF Calgary. It is located on Range Road 283 Township 22, immediately adjacent to the CALGARY GROWTH CORRIDOR, and adjacent to the Calgary City limits Range Road 284. This prime land and location is just minutes away from the Ring Road HWY 201 and all Commercial, Service Centers, it is ideal for Trucking or Agribusiness.



Essential Information

| | |
|-----------|-----------------|
| MLS® # | A2118603 |
| Price | \$2,980,000 |
| Bathrooms | 0.00 |
| Acres | 142.00 |
| Type | Land |
| Sub-Type | Commercial Land |
| Status | Active |

Community Information

| | |
|-------------|-------------------------|
| Address | W4; R28;t22;s34;sw |
| Subdivision | NONE |
| City | Rural Rocky View County |

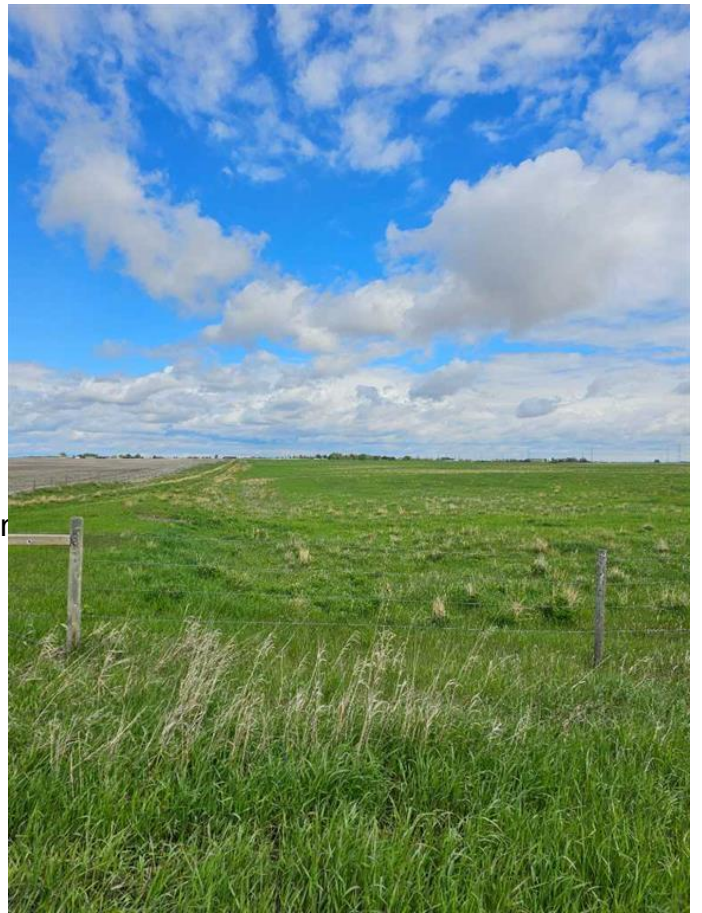
County Rocky View County
Province Alberta
Postal Code T1X 0H7

Additional Information

Date Listed March 28th, 2024
Days on Market 377
Zoning AGRI

Listing Details

Listing Office TREC The Real Estate Compar



Data is supplied by Pillar 9â,,ç MLSÂ® System. Pillar 9â,,ç is the owner of the copyright in its MLSÂ® System. Data is deemed reliable but is not guaranteed accurate by Pillar 9â,,ç. The trademarks MLSÂ®, Multiple Listing ServiceÂ® and the associated logos are owned by The Canadian Real Estate Association (CREA) and identify the quality of services provided by real estate professionals who are members of CREA. Used under license.

