

\$3,250,000 - 901 15 Avenue Sw, Slave Lake

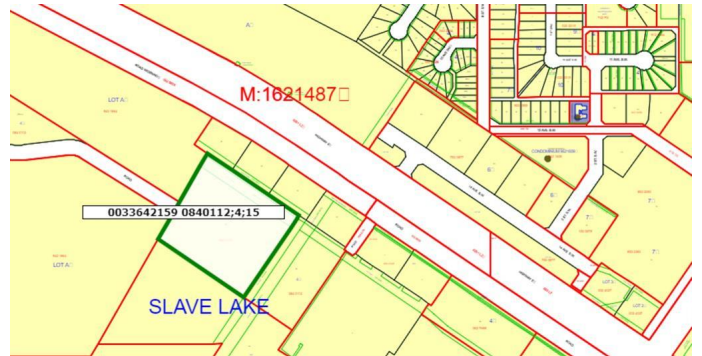
MLS® #A2057265

\$3,250,000

0 Bedroom, 0.00 Bathroom,
Land on 7.17 Acres

NONE, Slave Lake, Alberta

Great highway commercial exposure on this approximately 7 acre parcel, next to the Cornerstone Development. This parcel provides 2 services, owner will consider subdividing.



Essential Information

MLS® #	A2057265
Price	\$3,250,000
Bathrooms	0.00
Acres	7.17
Type	Land
Sub-Type	Commercial Land
Status	Active

Community Information

Address	901 15 Avenue Sw
Subdivision	NONE
City	Slave Lake
County	Lesser Slave River No. 124, M.D. of
Province	Alberta
Postal Code	T0G 2A4

Additional Information

Date Listed	June 9th, 2023
Days on Market	663
Zoning	C3

Listing Details

Listing Office

ROYAL LEPAGE PROGRESSIVE REALTY

Data is supplied by Pillar 9â„¸ MLSÂ® System. Pillar 9â„¸ is the owner of the copyright in its MLSÂ® System. Data is deemed reliable but is not guaranteed accurate by Pillar 9â„¸. The trademarks MLSÂ®, Multiple Listing ServiceÂ® and the associated logos are owned by The Canadian Real Estate Association (CREA) and identify the quality of services provided by real estate professionals who are members of CREA. Used under license.