

# \$1,850,000 - 54027 Highway 670, Grande Prairie

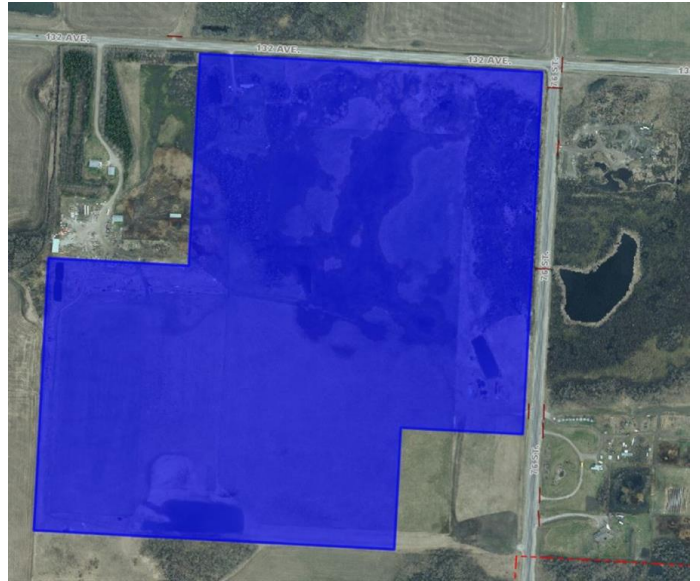
MLS® #A2021004

**\$1,850,000**

0 Bedroom, 0.00 Bathroom,  
Land on 127.01 Acres

NONE, Grande Prairie, Alberta

Amazing quarter section of land with great development potential. Located on the corner of 132 St and Range Road 54 within the city limits of Grande Prairie. It's situated just one quarter North of Carriage Lane Estates. This piece has been in the family for generations and is strategically positioned for future development in the area. This is a must see.



## Essential Information

|           |                 |
|-----------|-----------------|
| MLS® #    | A2021004        |
| Price     | \$1,850,000     |
| Bathrooms | 0.00            |
| Acres     | 127.01          |
| Type      | Land            |
| Sub-Type  | Commercial Land |
| Status    | Active          |

## Community Information

|             |                   |
|-------------|-------------------|
| Address     | 54027 Highway 670 |
| Subdivision | NONE              |
| City        | Grande Prairie    |
| County      | Grande Prairie    |
| Province    | Alberta           |
| Postal Code | T8X 0G4           |

## Additional Information

|             |                    |
|-------------|--------------------|
| Date Listed | January 24th, 2023 |
|-------------|--------------------|

Days on Market 801  
Zoning UR-R

### **Listing Details**

Listing Office RE/MAX Grande Prairie

Data is supplied by Pillar 9â,,ç MLSÂ® System. Pillar 9â,,ç is the owner of the copyright in its MLSÂ® System. Data is deemed reliable but is not guaranteed accurate by Pillar 9â,,ç. The trademarks MLSÂ®, Multiple Listing ServiceÂ® and the associated logos are owned by The Canadian Real Estate Association (CREA) and identify the quality of services provided by real estate professionals who are members of CREA. Used under license.